

# West Beach 2.5km walk

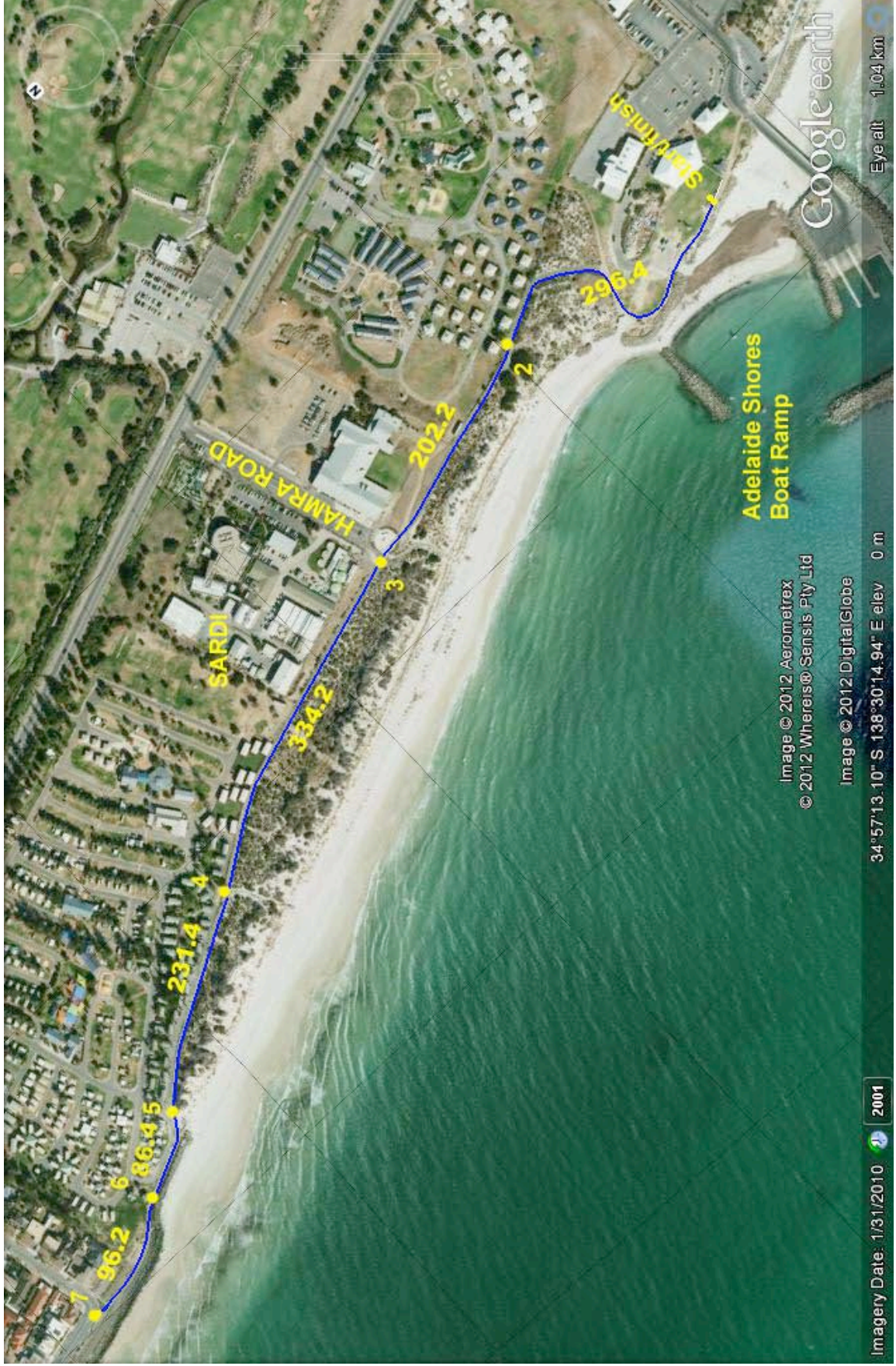
Measured June 2012

## Course measurement details

Measurer

Doug Smart

Ref	Course section	Date	9/06/2012
		sect dist	total dist
	Refer to marked plan of course showing reference points. The course is an out and back course following the shared path north. The course has been measured following the shortest distance race-line. This follows the tangents.		
	The start is 17.4m from the northern junction of the paving blocks leading to the yacht club. The start line is marked by two nails and washers on each side of the path. The turnaround is marked by a nail with washers about 2.5m before a bollard at the corner of Seaview and Chetwyn.		
1	Start/finish at outside yacht club		0.00
2	Path to beach from holiday village	296.44	296.44
3	Path to beach from Hamra Road	205.22	501.66
4	Path from caravan park	334.18	835.84
5	Start boardwalk and path to beach	231.40	1067.24
6	End of boardwalk	86.42	1153.66
7	U turn 2.5m before bollard	96.17	1249.83
8	Finish line	1250.17	2500.00



Google earth

Eye alt 1.04 km

Adelaide Shores Boat Ramp

Image © 2012 Aerometrex  
© 2012 Whereis® Sensis Pty Ltd

Image © 2012 DigitalGlobe

34°57'13.10" S 138°30'14.94" E elev 0 m

Imagery Date: 1/31/2010 2001