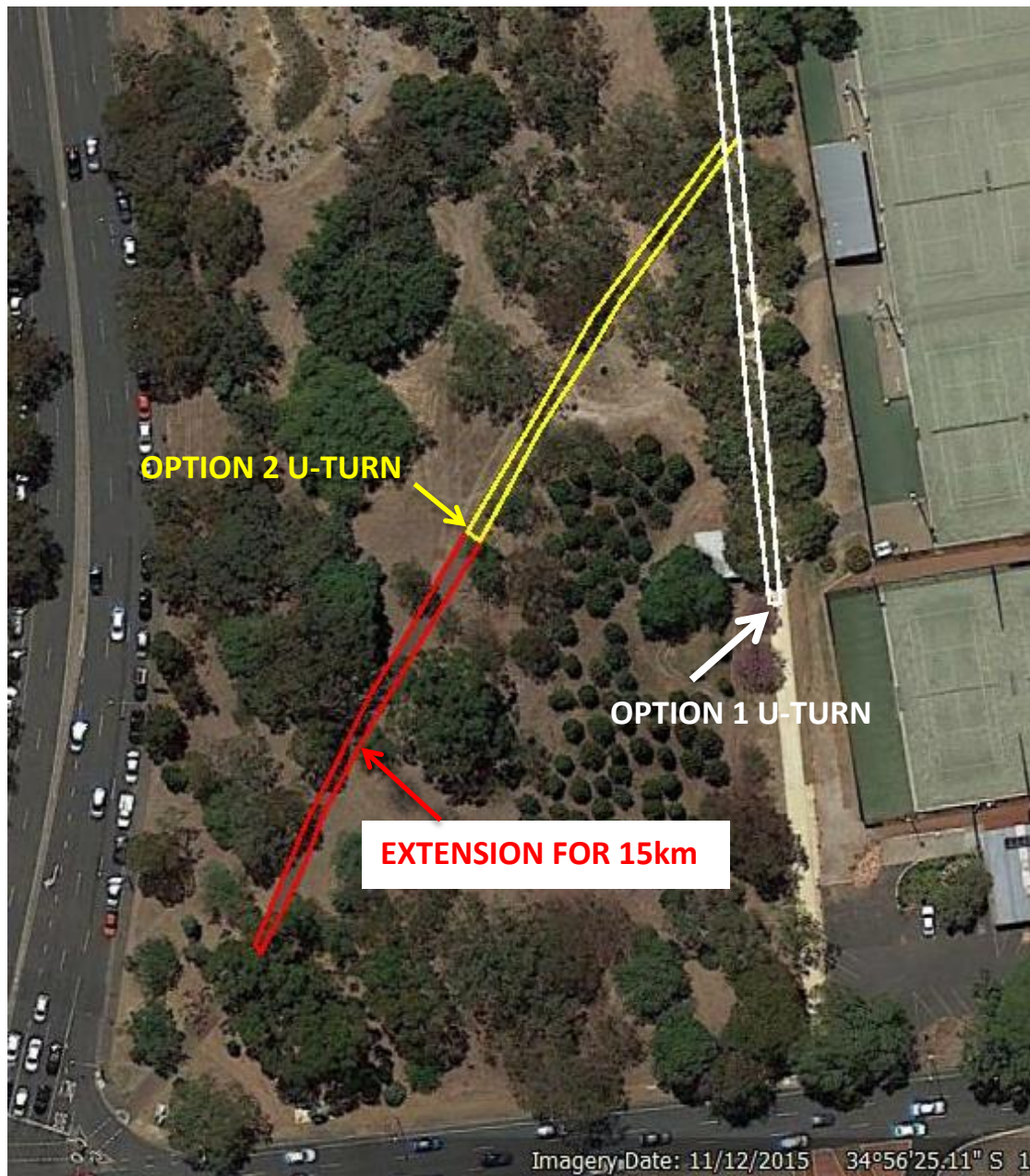


PEACOCK ROAD U-TURN OPTION DETAILS



Option 1 U-turn is by cyclist's head on pavement markings about 1m south of fence. Option 2 U-turn is opposite tree on east side and about 11.5m north of tree on the west side.

The U-turn of the 15km is on an extension of Option 2. It is by a large gum tree on the east side and about 2.5m before a "dogs on leash" sign.

It is not possible to fit the extension on option one as the U-turn would be about 0.5m from the kerb on Greenhill Road.

All U-turns are marked by yellow paint and nails and washers in the middle and each side of the path.